

GOVERNORS' REPORT TO PARENTS FOR THE ACADEMIC YEAR 2022—2023.



An overview of school life during the year.



Chairperson's Message

Dr. David Bolton

Dear Parents and Carers,

As the Holy and festive season approaches and we find ourselves reflecting on the year gone by, I am filled with gratitude for the warmth and spirit that defines our school community. The holiday season is a special time when we come together to celebrate not only the joy of the season but also the bonds that unite us as a school family.

First and foremost, I want to express my heartfelt appreciation to our dedicated staff for their tireless efforts in creating a nurturing and enriching learning environment for our pupils. Their commitment to fostering academic excellence, creativity, and personal growth is truly commendable, and it forms the foundation of our school's success.

Our pupils, are the heart and soul of our school. Their enthusiasm, curiosity, and unique talents bring life to our classrooms and school community. A special thank you goes out to you, our parents and carers. Your unwavering support, whether through volunteer work, attendance at events, or simply being there for your children, is invaluable. The partnership between home and school is crucial, and your involvement enhances the educational experience for every pupil.

As we celebrate Christmas and the approaching New Year, we remember the true spirit of the season – a time for kindness, generosity, and compassion. Myself as Chair and the rest of the Governing body hope that the Holy Seasons of Advent and Christmas, fill your hearts and homes with love and laughter.

Looking ahead to the new year, I am excited about the possibilities and opportunities that await our school. As many of you know we will be embarking on our search for a new Head Teacher to build on the considerable successes of Mr Watkins during his fifteen year tenure as Head of our school. I thank him deeply on behalf of all the school community, Staff and Governing Body. Together, as a united community, we will continue to strive for excellence and create an environment where every pupil can thrive.

Finally I would like to extend my best wishes to you for a Holy Christmas and a Happy and Prosperous New Year!

Best Wishes,

David Bolton

Chair of Governors

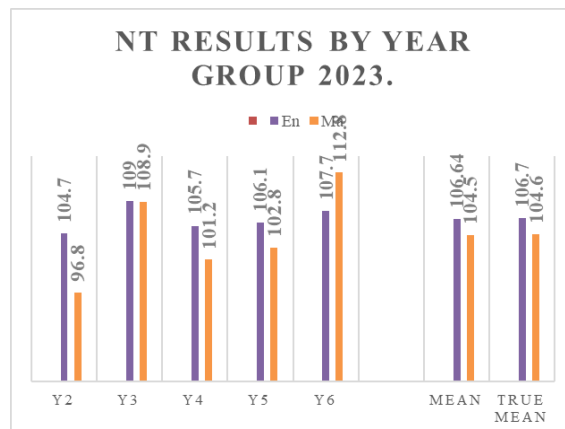
PROGRESS MADE IN KEY TARGET AREAS

PROGRESS MADE

The key targets identified for the year in our School Development Plan were to:

1. The delivery of a **Core Knowledge Curriculum**, referencing MER recommendations, in relation to further development of pedagogy and to content. A full Core Knowledge Curriculum is now planned and fully functioning. Each class' year is broken down into eight or nine Domains of learning. Early evidence indicates a successful introduction.
2. To further develop a **growth mindset** amongst pupils and staff with particular reference to girls and Mathematics. Pupils were introduced to successful female mathematicians and scientists as planned. They also had input on the sort of positive thinking that's required in order to do well. Our target here has been partially met and this area will continue to be a focus.
3. To **review and update the school's assessment programme** in order for it to be fully fit for purpose in relation to the CfW and to the revised RECD. Mrs. Azzopardi successfully oversaw this work which examined the link between our current practice and the demands of the new Religious Education Directory as approved by the Bishops of England and Wales.

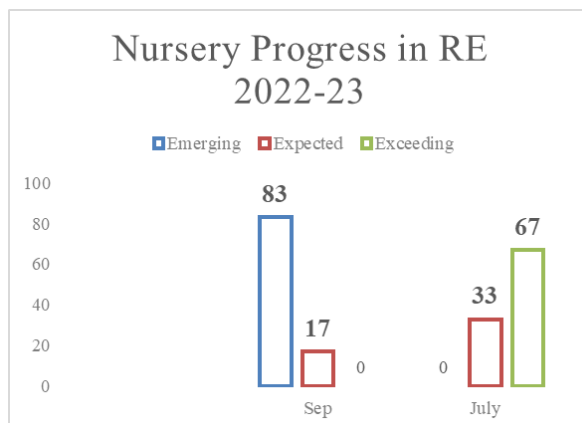
National Test Results 2023.



The data, above, show our children's results in the WG's English and Procedural Mathematics test (SS of 100 = average).

These data reflect high standards in literacy and numeracy. The mean SSs of 106.7 for reading and 104.6 for Maths are significantly above the Welsh means. They are at percentile ranks of 68 and 63.

Assessment in the Atelier.



Staff have worked diligently to produce a bespoke Baseline Assessment for our new Nursery pupils. It has given us the opportunity to clearly identify the expectation we have for children beginning school with us. The initial assessment is completed in September and then repeated in July. This gives us a very useful measure of progress over the academic year. The example above shows the results for Religious Education; it highlights the high rates of progress being made.

DATA 2022-23

STANDARDS ACHIEVED BY OUR PUPILS.

ATTAINMENT SIGNIFICANTLY ABOVE THE NATIONAL MEAN.

Our children attained very highly throughout the year; some of this is measurable and some is not!

In Procedural Mathematics results are very impressive as all year groups have standardized scores significantly above 100 (the national mean) and the mean percentile rank is 65; this indicates that our pupils are attaining significantly above the average across Wales.

The reading data opposite illustrate the position that our pupils achieve by the time they leave us. The mean reading age for the cohort is 12 years and 7 months (12:7). This is very impressive but in reality it is even better than it first seems as ten of our pupils (43%) attained RAs of 13:7, which is the highest our assessment reaches. Therefore, their actual average RA is significantly higher than 12:7.

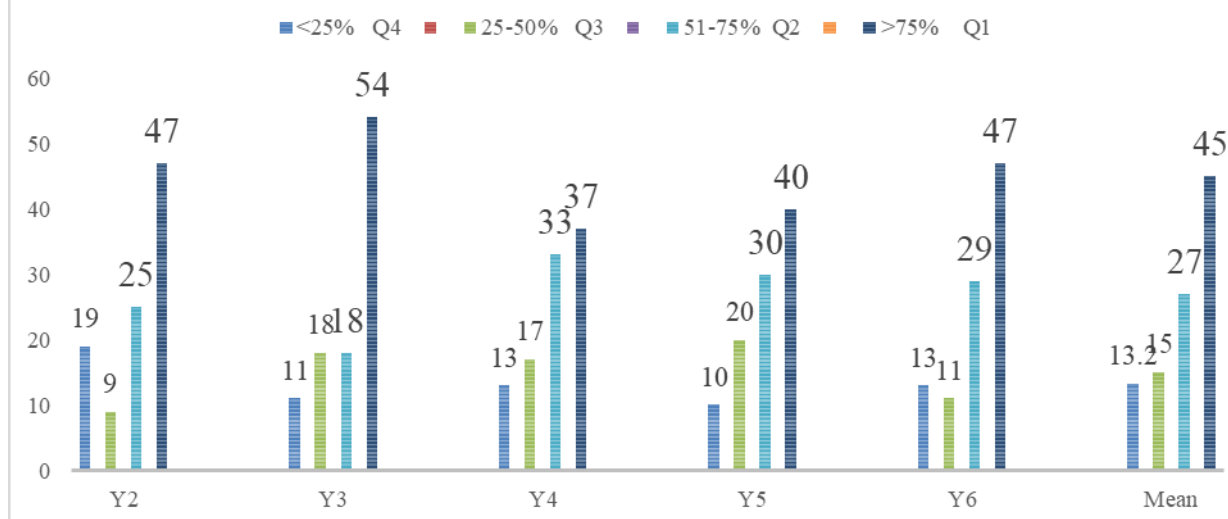
Governors wish to express their gratitude to all staff for their hard work that has allowed our children to do so well and to parents for the support that you provide at home.



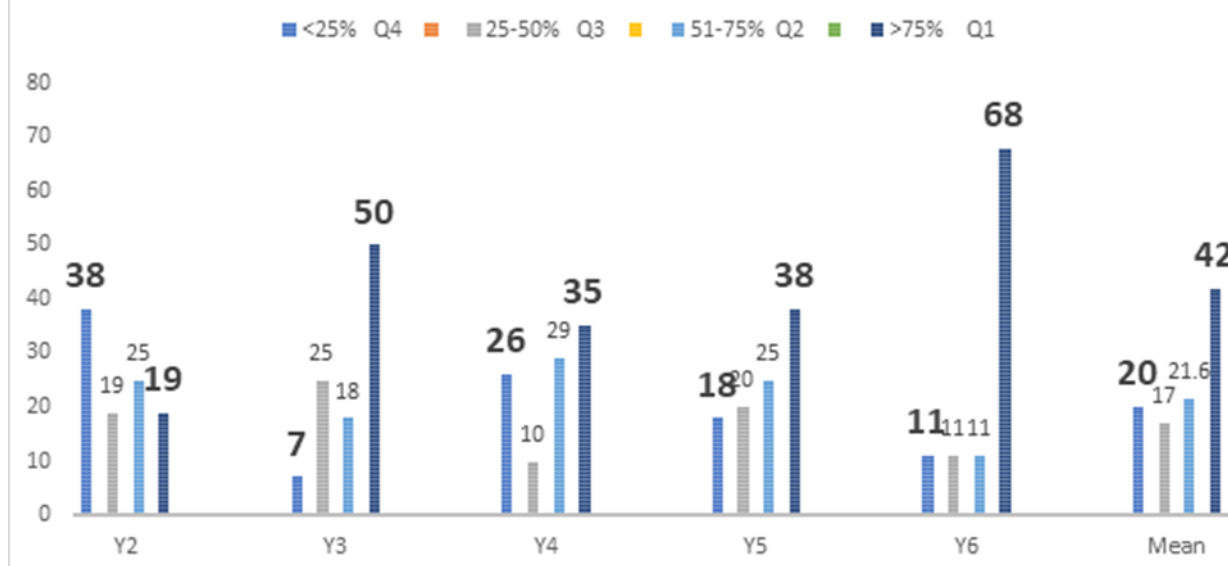
Pupils enjoyed all of the varied foods on offer at our school celebration of United Nations Day.

NATIONAL TEST RESULTS CONTINUED.

READING NTS BY QUARTILE 2023



PROCEDURAL MATHS NTS BY QUARTILE 2023.



The data in these graphs show the National Test results shown in quartiles. It is good to note the very high rates of results in the upper quartile (the top 25%). Any score higher than 25% indicates attainment above national averages. Across the school over 40% of our pupils are in the top quartile. This indicates very high levels of attainment. Governors are grateful to all of the staff involved in achieving these impressive results and they are proud of our children who worked so well throughout the year.



Mrs Kandapuram Poulouse came in to talk to our Year 4/5 class about how she uses maths everyday in her job. **Jibby** works in the Princess of Wales Hospital and gave the children some problems to solve about medication and quantities.

FURTHER POINTS OF INTEREST...

GENERAL INFORMATION

A wide range of innovative **Extra-curricular activities** have been provided including: Stargazing (night time sessions when the weather allows), Minecraft, chess, gardening, well-being, choir, Code Club, football, rugby and netball. This year, our Year 5 and 6 pupils travelled to Abernant in Mid-Wales to enjoy a residential visit. Governors are most grateful to the staff who give freely of their time to allow our children these opportunities.

The **health and safety** of all in our school are of the utmost importance to us. Over a period of time, we have made changes to the main building so that now all classrooms have direct egress to the grounds. This means that nobody in a classroom has to walk along any corridors to leave the building. Therefore, we are able to evacuate it within 90 seconds of an alarm being sounded. We have adjusted the way that we clean our toilet areas over the last year and as a result, our children have sufficient, clean lavatory space available to them. We now have plans in place to increase the learning space available for our Early Years pupils.

Governors have reviewed a number of **key policies** during the year including: Safeguarding, Teaching and Learning, Complaints and Assessment. The most frequently referenced policies are available on our new website at www.stmaryscatholicprimary.co.uk

Our **financial position** is nuanced. The underlying trend, in relation to our regular delegated budget, is at best at a standstill position. The summary is shown here.

Summary Budget Position

Budget Allocation	978,975
Estimated Income	228,855
Underspend (+) or Overspend (-) in prior year	97,447
Total Amount Available	1,305,278
Total Estimated Expenditure	1,286,785
Estimated Credit/Debit	18,493

The current budget is of course to be balanced for this academic year with the likelihood of a modest surplus. Projected figures for the coming year indicate a fall in our per pupil budget. Governors will manage this situation prudently.



Our 4/5 Class on their Fieldtrip to Bryngarw Park as part of their Rivers Domain.



Staff Vs Year 6 pupils in 'friendly' game of Rounders.



School Led Mass in our Parish of St. Mary's.

Catholic Life of the School and Religious Education

Religious Education remains a core area of learning at St Mary's and our Catholic ethos permeates all aspects of our work. Staff ensure that not only do pupils acquire academic knowledge but also a deeper understanding of our faith and principles that shape our diverse society.

The Bishops of England and Wales have produced a new Religious Education Directory (RED). The Directory follows the Liturgical year and is comprised of 6 topics that pupils will study over an academic year. The topics become more challenging as pupils progress through the school, allowing them to build on their knowledge and understanding. Mrs Azzopardi and Mrs Jones are collaborating within a working party to develop a new scheme of work that fulfils the requirements of the directory, ensuring pupils are given opportunities to learn RE across all areas of the curriculum (for example in art, music, literacy and science). We will begin delivering the new scheme in September 2024.

We are so fortunate to have a strong partnership with our parish, St Mary's. Fr Tim regularly visits our pupils to celebrate the sacrament of Reconciliation during Advent and Lent, celebrate Mass and also join RE lessons. This presents a wonderful opportunity for pupils as RE lessons with a sacramental focus, including Baptism, Eucharist, Confirmation, Marriage and Ordination are enhanced. Pupils engage with Fr Tim and deepen their knowledge understanding of the Sacraments.

In the month of May, pupils actively participated in our annual devotion to Our Lady. They reverently laid flowers and plants at the feet of Our Lady, engaging in prayer and song to honour her. Our outdoor learning cabin was transformed into a beautiful grotto.

Our fantastic school choir remains actively involved in supporting events within our Parish community including singing at the SVP lunch for senior citizens at Christmas, singing at the Festival of Carols and even duetting with Bridgend Male Choir.



Fr. Tim with our Year 6 pupils discussing the Sacrament of Marriage.

As pupils prepared for Easter, they deepened their understanding of *prayer, fasting and almsgiving*. Our school community raised funds for CAFOD, contributing to and supporting their vital work.



Devotion to Our Lady.



Our School Choir performing at the Festival of Carols.

The Governing Body.

THE CHAIR IS DR. DAVID BOLTON AND MR. BRENDAN DEVINE IS THE VICE-CHAIR. THEY ARE SUPPORTED BY:

Mrs. Elizabeth Taylor, Mrs. Justine Daly, Mrs. Maureen Harris, Rev. Robert Coyne and Mrs. Denise Buckley-Mofidi who are Foundation Governors.

Mrs. Rebecca White is our Parent Governor.

Mrs. Sarah Hunt is our Local Authority Governor.

Miss. Annalese Canter-Lewis and Mrs. Lorna Large are Staff Governors.

The Headteacher, Mr. Lyndon Watkins is also a member of the Governing Body.